

PALFINGER

PK 18500 PERFORMANCE

**THE UNIVERSAL
TALENT**

LIFETIME EXCELLENCE



LIFETIME EXCELLENCE

PALFINGER loader cranes are convincing due to their superior life-cycle performance. They are the most economical and also the most reliable over the entire product life. From solution finding to resale.

- **Better solutions**
- **Better efficiency**
- **Better ergonomics**
- **Higher availability**
- **More reliability**
- **Better ecology**
- **Higher serviceability**
- **Higher value retention**



MULTIFUNCTIONAL AND RELIABLE

Ideally suitable for loading and unloading unit cargo and construction machinery, the PK 18500 Performance stands out by virtue of its reliability and versatility. Three stabiliser spreads and up to five hydraulic extension arms make it the perfect working unit for an extremely wide range of jobs.





THE **IDEAL** LOADING CRANE

10 Highlights



Functional Design

Practical and attractive

Robust plastic covers protect crane parts against dirt and damage. Better appearance and increased operational comfort – during the entire lifetime.



Ergonomic crane control

All information at a glance

The operating levers for all crane functions are arranged ergonomically on the console. This facilitates comfortable, efficient working. The control console is mounted so that it is easy to service.



High Speed Extension

For efficient assignments

The High Speed Extension speeds up the extension boom system. Crane works faster and more efficiently.



Coating technology

Top quality surface protection at a glance

The KTL coating lays the foundation for a perfect surface protection. Afterwards the components are either coated in the powder-coating facility or are finished with a two-components-topcoat. High value retention and excellent corrosion protection for the whole life of a crane.



Hose equipment for accessories

Versatile and user-friendly

With this option you can provide the oil supply to accessories. The hoses are routed in compact troughs and plastic link chains. They are therefore very well protected.



Internally routed oil ducts

Maximum protection thanks to compact design

The internally routed oil passages make it possible to have a compact design for the extension system and ensure perfect protection from damage.



Outriggers

For optimum stability

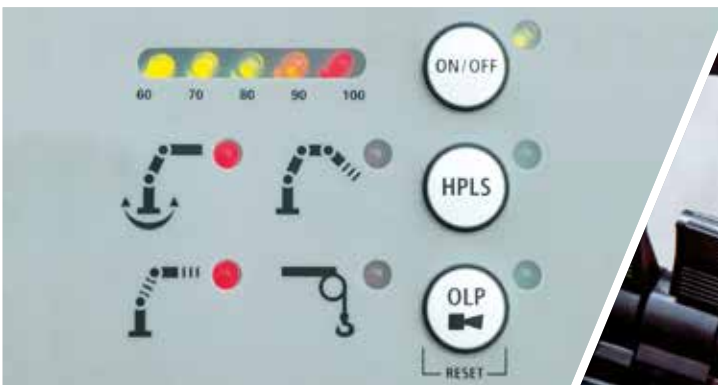
The 4.8 m (15' 9'') outrigger system installed as standard ensures good stability. As an option a 6.6 m (21' 9'') telescopic outrigger is available. The pipework to the support cylinders is internally routed in the outriggers, providing a high level of protection from damage at all times. On request, the outriggers can be supplied with support cylinders that swivel up hydraulically through 180°.



Central lubrication

Optimised lubrication

For all grease points on the base frame.



PAL 50*

Comfort and safety

The PALTRONIC 50, PALFINGER offers the latest control electronics for the series production crane. The custom designed electronic operates and monitors the crane and offers more efficiency in use and safety.



Radio remote control*

Dialogue with the operator

PALFINGER remote control systems offer the options of linear levers or joysticks. An LED display provides the crane operator with information about various operating conditions.

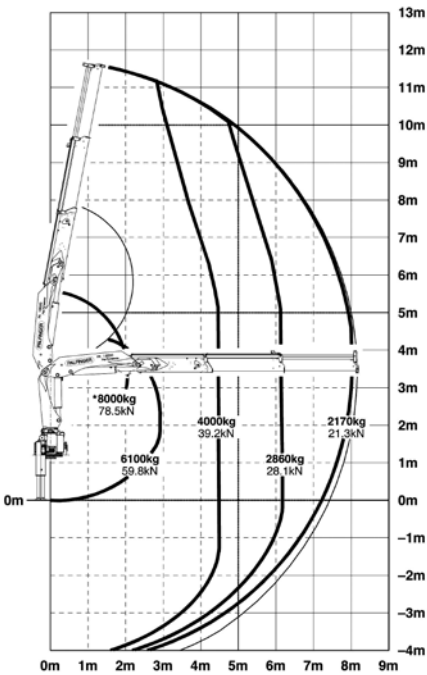


PK 18500

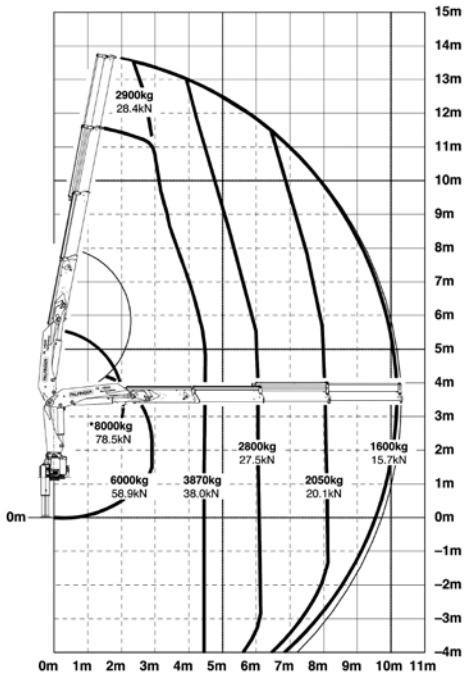
PERFORMANCE

Impressive quality.

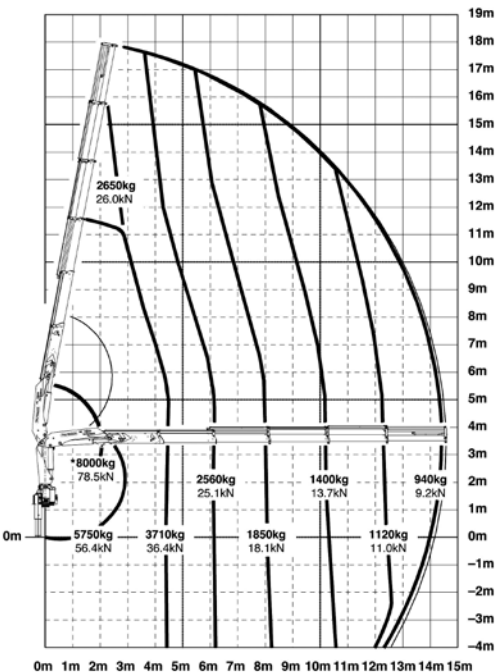
A



B



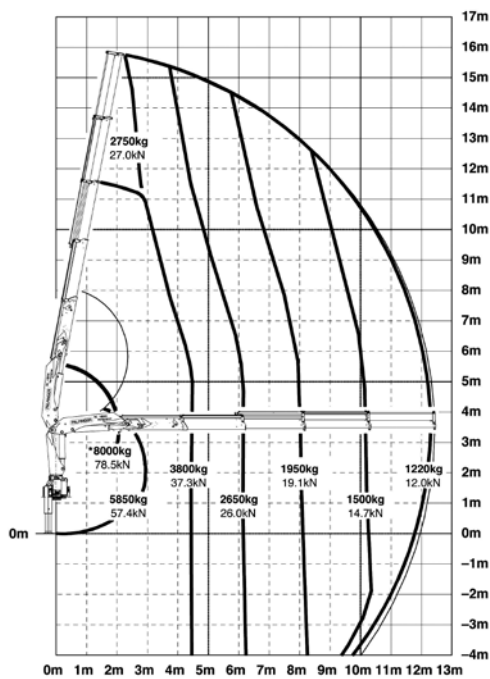
D



The outreaches stated are with a boom angle of 20° and are therefore not the maximum.

Lifting capacities

C



max.		6100 kg	13450 lbs	A
4.5 m	14' 9"	3970 kg	8750 lbs	
6.1 m	20' 0"	2860 kg	6310 lbs	
8.0 m	26' 3"	2170 kg	4780 lbs	

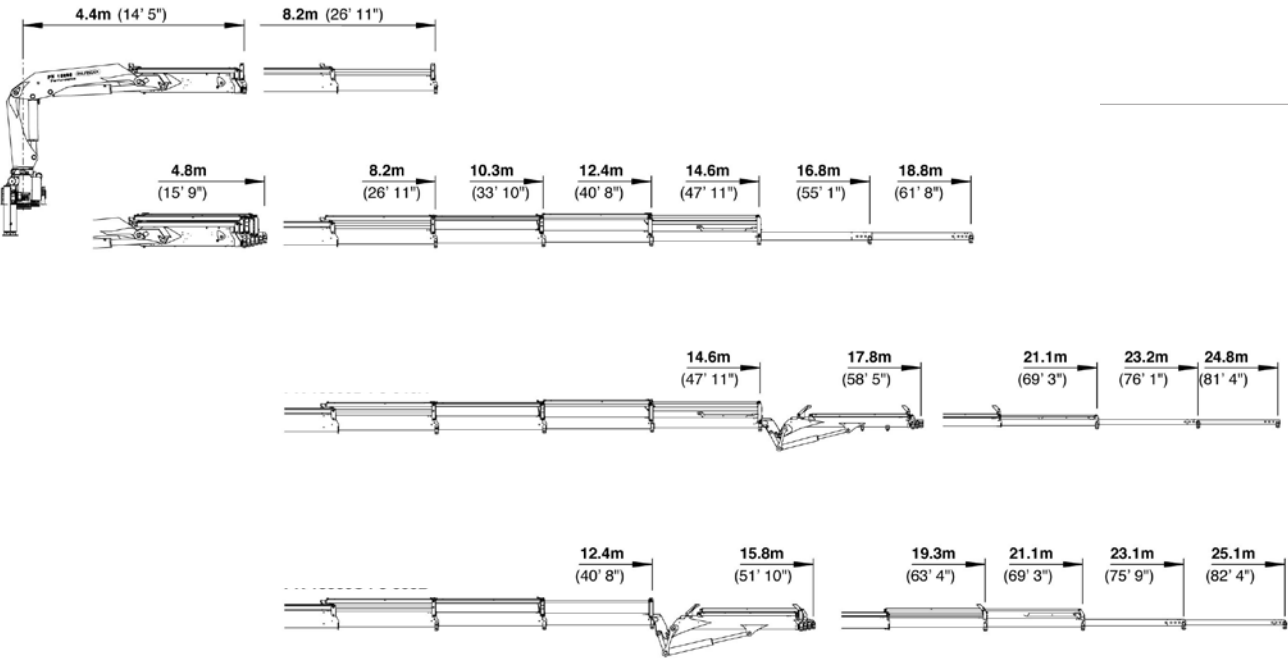
max.		6000 kg	13230 lbs	B
4.5 m	14' 9"	3870 kg	8530 lbs	
6.1 m	20' 0"	2790 kg	6150 lbs	
8.0 m	26' 3"	2050 kg	4520 lbs	
10.2 m	33' 6"	1600 kg	3530 lbs	
12.4 m*	40' 8"	1250 kg	2760 lbs	
14.6 m*	47' 11"	1000 kg	2200 lbs	
16.6 m*	54' 6"	830 kg	1830 lbs	

max.		5850 kg	12900 lbs	C
4.5 m	14' 9"	3790 kg	8360 lbs	
6.1 m	20' 0"	2650 kg	5840 lbs	
8.0 m	26' 3"	1950 kg	4300 lbs	
10.2 m	33' 6"	1500 kg	3310 lbs	
12.3 m	40' 4"	1220 kg	2690 lbs	
14.5 m*	47' 7"	980 kg	2160 lbs	
16.7 m*	54' 9"	810 kg	1790 lbs	
18.7 m*	61' 4"	620 kg	1370 lbs	

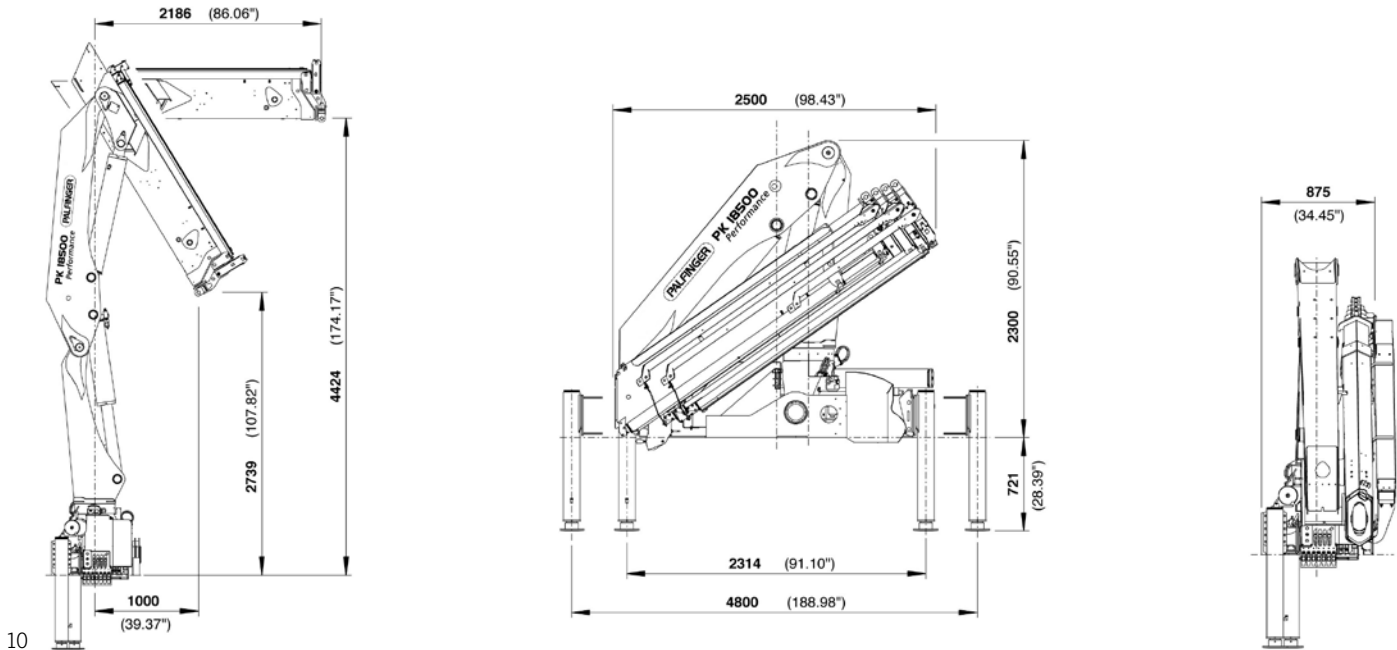
max.		5750 kg	12680 lbs	D
4.5 m	14' 9"	3710 kg	8180 lbs	
6.1 m	20' 0"	2560 kg	5640 lbs	
8.0 m	26' 3"	1850 kg	4080 lbs	
10.2 m	33' 6"	1390 kg	3060 lbs	
12.3 m	40' 4"	1120 kg	2470 lbs	
14.4 m	47' 3"	940 kg	2070 lbs	
16.6 m*	54' 6"	770 kg	1700 lbs	
18.7 m*	61' 4"	620 kg	1370 lbs	

PERFECT DIMENSIONS

EXTENSION BOOM VARIATIONS



DIMENSIONS



Technical specifications

EN 12999 H1-B3

PK 18500

Max. lifting moment	18.3 mt/180.0 kNm	132710 ft.lbs
Max. lifting capacity	8000 kg/78.5 kN	17640 lbs
Max. hydraulic outreach	14.6 m	47' 11"
Max. manual outreach	18.8 m	61' 8"
Max. outreach (with fly-jib)	25.1 m	82' 4"
Slewing angle	400°	

PK 18500D PJ 040A

Slewing torque	2.4 mt/24.0 kNm	17700 ft.lbs
Outreach	8.2 m	26' 11"
Stabilizer spread standard	4.8 m	15' 9"
Stabilizer spread max.	6.6 m	21' 9"
Fitting space required	0.88 m	2' 11"
Width folded	2.5 m	8' 2"
Max. operating pressure	300 bar	4350 psi

PK 18500C PJ 060B

Recommended pump capacity	from 45 l/min to 65 l/min	11.9 US gal./min 17.2 US gal./min
with RC- and LS-system	from 65 l/min to 80 l/min 17.6	17.2 US gal./min 21.1 US gal./min
Dead weight standard crane	2117 kg	4670 lbs

KP-PK18500M2+EN

Cranes shown in the leaflet are partially optional equipped and do not always correspond to the standard version. Country-specific regulations must be observed. Dimensions may vary. Subject to technical changes, errors and translation mistakes.