

# PK 36080 MHPLS

**PALFINGER**

LIFETIME EXCELLENCE

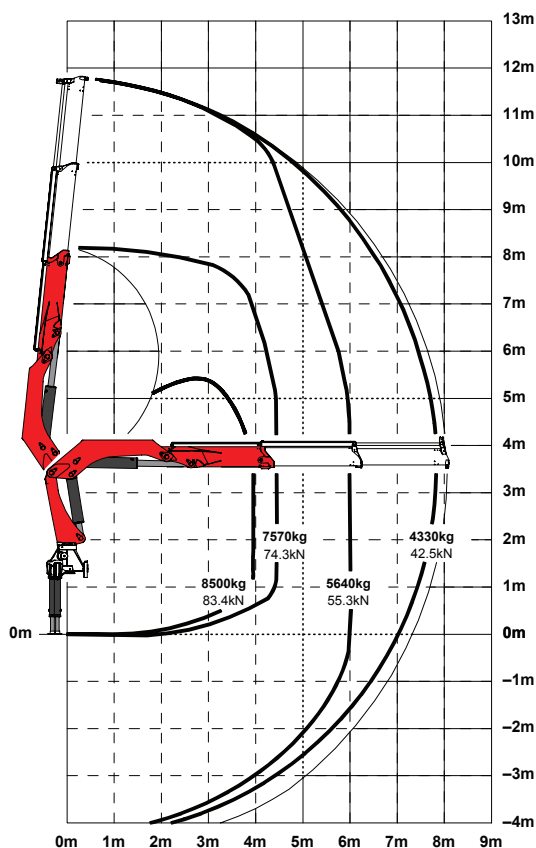
## OUTSTANDING PERFORMANCE, SAFETY & LONG REACH DUE TO THE HPLS SYSTEM



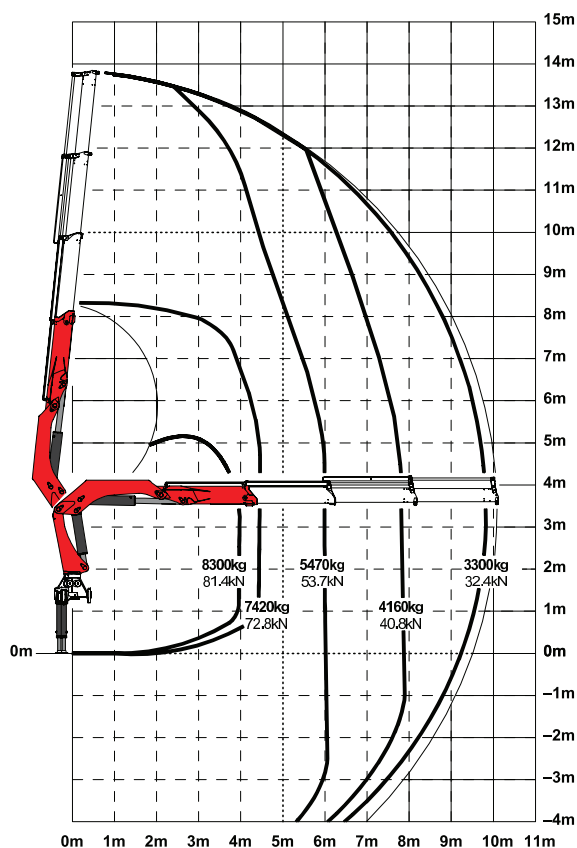
# PK 36080

## OPTIMUM WEIGHING TO POWER RATIO

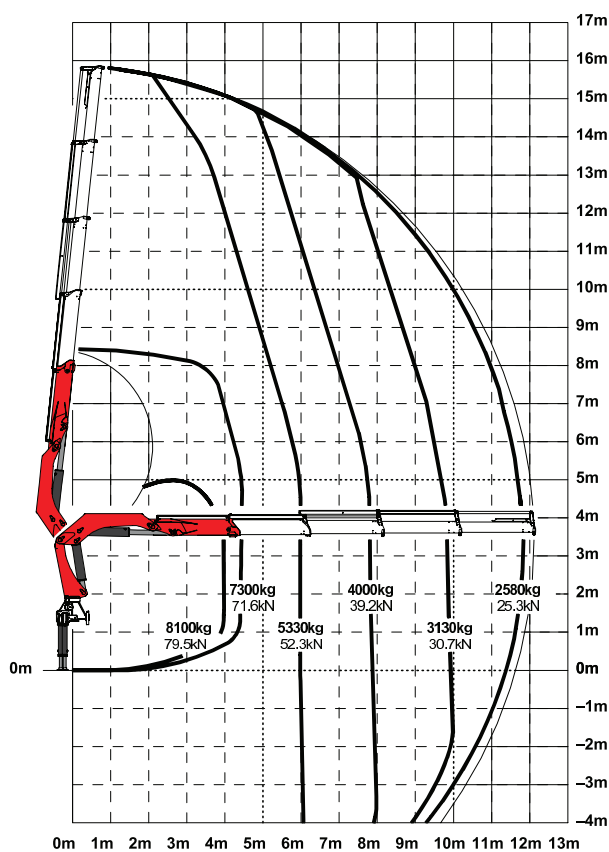
PK 36080 A



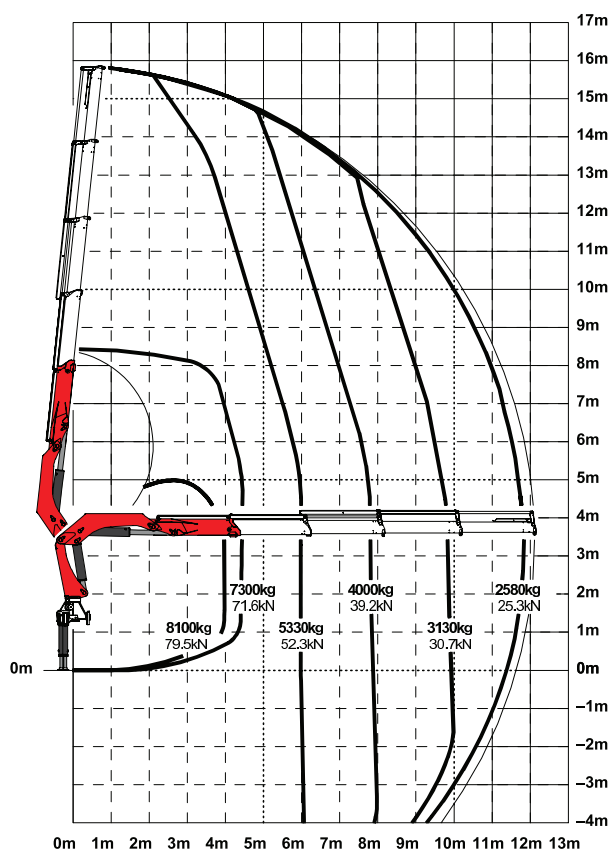
PK 36080 B



PK 36080 C

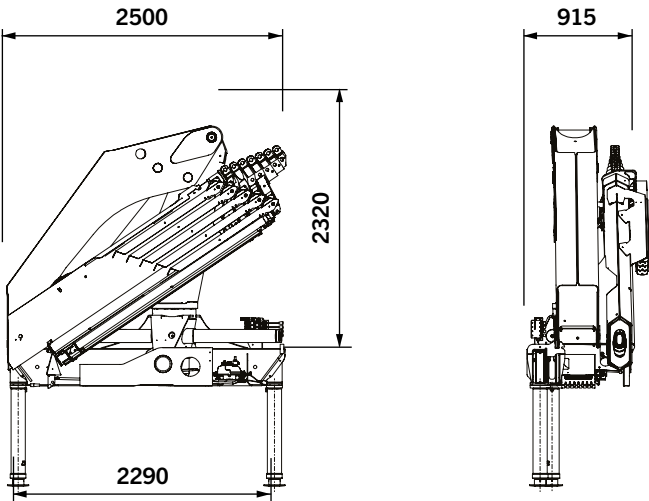


PK 36080 D





DIMENSIONS (mm)



- Regenerative System
- HPLS
- High Pressure Filter
- Ergonomic Levers
- Load Limit



PK 36080 B

Hydraulic

4,0 m	8300 kg
4,4 m	7420 kg
6,0 m	5470 kg
7,8 m	4160 kg
9,8 m	3300 kg

Manual

11,9 m	2670 kg
14,0 m	2000 kg
16,2 m	1300 kg

TECHNICAL SPECIFICATIONS

Maximum lifting moment	34,8 tm / 341,0 kNm
Maximum lifting capacity	8500 kg
Maximum hydraulic outreach	14,2 m
Maximum outreach	20,7 m
Slewing Angle	400°
Slewing Torque	3,8 tm / 37,3 kNm
Stabilizer spread standard	6,0 m
Fitting space required	0,92 m
Width folded	2,5 m
Operating pressure	300 bar
Recommended pump capacity	55 L / min to 80 L / min
Dead Weight	3120 kg

PK 36080 C

Hydraulic

4,0 m	8100 kg
4,4 m	7300 kg
6,0 m	5330 kg
8,0 m	4000 kg
10,0 m	3130 kg
11,8 m	2580 kg

Manual

14,0 m	2000 kg
16,2 m	1300 kg
18,4 m	900 kg

PK 36080 D

Hydraulic

4,7 m	6700 kg
6,0 m	5210 kg
8,0 m	3870 kg
10,1 m	2990 kg
12,0 m	2440 kg
13,8 m	2070 kg

Manual

16,1 m	1300 kg
18,4 m	900 kg
20,7 m	600 kg

# LIFETIME EXCELLENCE

**PALFINGER LOADER CRANES ARE  
OUTSTANDING WITH THEIR SUPERIOR LIFE  
CYCLE PERFORMANCE. THEY ARE THE MOST  
ECONOMICAL & ALSO THE MOST RELIABLE  
OVER THE ENTIRE PRODUCT LIFE.  
TRAIN SOLUTION FINDING THE RESALE.**

**HIGHER VALUE  
RETENTION**

**BETTER  
SOLUTION**

**BETTER  
EFFICIENCY**

**HIGHER  
AVAILABILITY**



**BETTER  
ERGONOMICS**

**BETTER  
ECOLOGY**

**MORE  
RELIABILITY**

**HIGHER  
SERVICEABILITY**