

**PALFINGER**

## **P 90 T LOW SMART**

**SIZE XXS: FAST RESPONSE IN AREAS THAT ARE HARD TO REACH, NOT ONLY BECAUSE THEY ARE DIFFICULT TO ACCESS BUT ALSO BECAUSE THE STABILISATION AREA IS EXTREMELY LIMITED**

**LIFETIME EXCELLENCE**



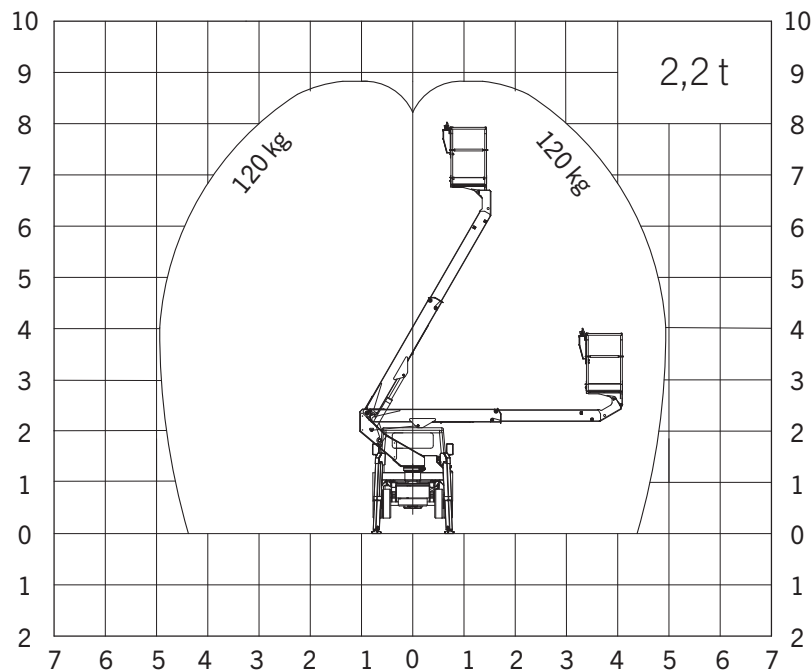
## TECHNICAL SPECIFICATIONS

Maximum working height	8.80 m
Maximum cage floor	6.80 m
Maximum lateral outreach	5.00 m
Angle of main boom	-30° + 60°
Turntable rotation	360°
Basket capacity	120 kg
Basket dimensions	0.85 x 0.7 x 1.1 m
Height in transport conditions	2.15 m
Width in transport conditions	1.56 m
Length in transport conditions	4.55 m
GVW	2000 kg

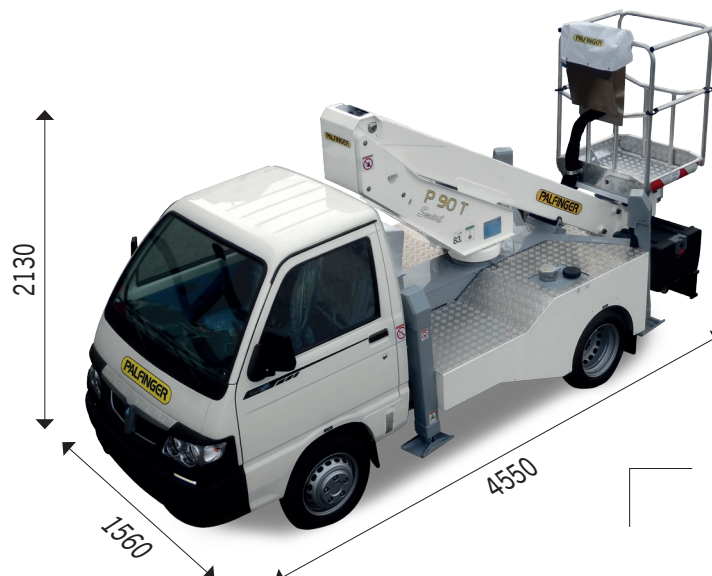
## OPTIONAL

Fiberglass basket
Adjustable 60 W headlamp on the basket
Title alarm with audio signal
Insulation 1000 V
Aluminium side panels
Paint upon request by the client, aerial part

## WORKING DIAGRAMS



## DIMENSIONS



SALES DEALER